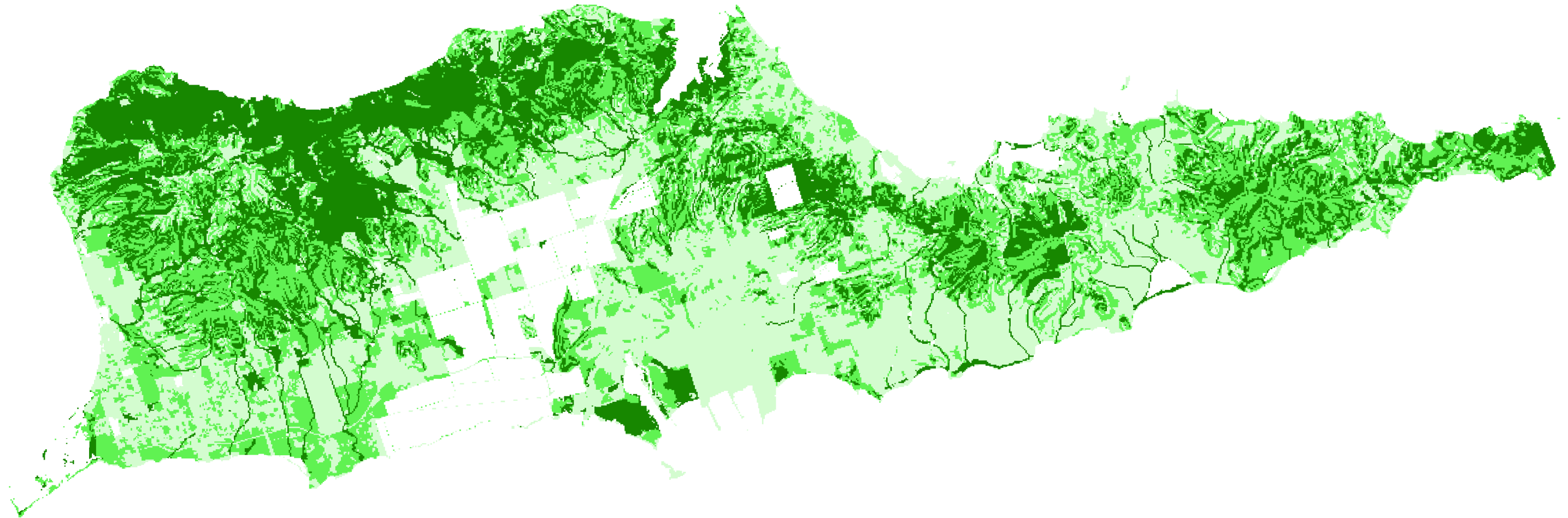


Potential for Forest Stewardship Program Benefits

St. Croix U.S Virgin Islands



Stewardship Potential	STX Stewardship Capable Lands					
	Forest		Non-Forest		Total	
	Acres	% Total For.	Acres	% Total Non-For.	Acres	% Total
Low	0.0	0%	5954.8	77%	5954.8	19%
Medium	11695.7	49%	1575.8	20%	13271.5	42%
High	12297.5	51%	203.1	3%	12500.6	39%
Total :	23993.2		7733.7		31726.9	



Territory of the Virgin Islands:
John deJongh, Governor
Gregory R. Francis, Lt. Governor

VI Department of Agriculture
Dr. Petersen, Commissioner
Errol Chichester, Assistant Commissioner



Stewardship Potential

- Low
- Medium
- High

0 0.25 0.5 1 1.5 2 Miles

MAP NOTES:

Date : December 2007
Datalayer: re_weight.img
Filename: USDA_stx_potential.mxd
Map by : Russell Slatton
Geographic Consulting

CONTACT INFORMATION:

Marilyn S. Chakroff, U&CF Coordinator
VI Department of Agriculture
#1 Estate Lower Love
Kingshill, VI 00850
340-778-0998 ext. 256
Email: marilynchakroff@hotmail.com